

# FORM B – BUILDING

Assessor's Number USGS Quad Area(s) Form Number

17/4	Reading		400
------	---------	--	-----

MASSACHUSETTS HISTORICAL COMMISSION  
 MASSACHUSETTS ARCHIVES BUILDING  
 220 MORRISSEY BOULEVARD  
 BOSTON, MASSACHUSETTS 02125

**Town:** Reading

**Place:** (*neighborhood or village*) Downtown

## Photograph



**Address:** 335 Main Street

**Historic Name:** Barry Motor Sales

**Uses:** Present: commercial

Original: commercial

**Date of Construction:** 1930

**Source:** *Chronicle*, April 25, 1930

**Style/Form:** ---

**Architect/Builder:** unknown

## Exterior Material:

Foundation: concrete

Wall/Trim: brick

Roof: tar and gravel

**Outbuildings/Secondary Structures:**  
none

**Major Alterations** (*with dates*):  
date unknown – new storefront windows

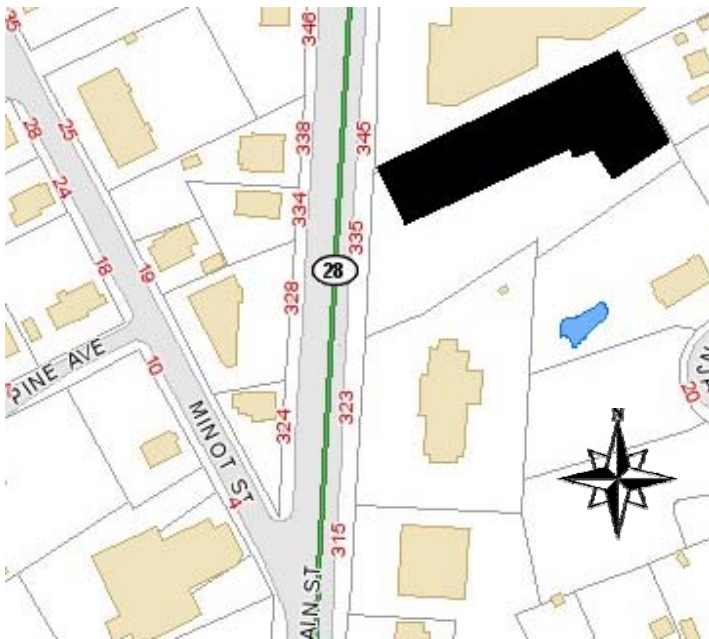
**Condition:** good

**Moved:** no | x | yes | | **Date** \_\_\_\_\_

**Acreage:** 0.89 acre

**Setting:** mixed downtown area

## Topographic or Assessor's Map



**Recorded by:** Lisa Mausolf

**Organization:** Reading Historical Commission

**Date** (*month / year*): July 2010

**RECEIVED**  
**AUG 20 2010**  
 MASS. HIST. COMM.

# INVENTORY FORM B CONTINUATION SHEET

READING

335 Main Street

MASSACHUSETTS HISTORICAL COMMISSION

220 MORRISSEY BOULEVARD, BOSTON, MASSACHUSETTS 02125

Area(s) Form No.

	400
--	-----

Recommended for listing in the National Register of Historic Places.

*If checked, you must attach a completed National Register Criteria Statement form.*

## ARCHITECTURAL DESCRIPTION:

*Describe architectural features. Evaluate the characteristics of this building in terms of other buildings within the community.*

The building at 335 Main Street is a well-preserved example of an early 20<sup>th</sup> century automobile showroom/repair facility. The single-story brick structure with concrete trim displays a façade which is sixty feet wide with a stepped parapet. The top level of the parapet is framed by concrete scroll brackets and there is a central cement diamond with contrasting squares at the ends of the elevation. The center entrance contains a single door which was originally topped by transom lights. On either side is a large four-part display window set into a shallow reveal with a band of continuous brick corbelling at the top. The windows are now filled with reflective glass and a solid panel caps each window; originally this was transom glass. One of the two former windows on the north side has been filled with brick. On the south side there are three bays – a central set of double doors flanked by display windows. Concrete squares at the cornice mark the ends of the bays. Behind the showroom building, the repair facilities are constructed of decorative concrete block. Many of the former openings have been altered. An original metal industrial window survives in the westernmost opening on the north elevation.

## HISTORICAL NARRATIVE

*Discuss the history of the building. Explain its associations with local (or state) history. Include uses of the building, and the role(s) the owners/occupants played within the community.*

This building (originally 129 South Main Street) was constructed in 1930 for Barry Motor Sales on the site of the former Auto Glass Co. building. Barry Motor Sales began in Wakefield in 1920, opening this facility in Reading ten years later. David T. Barry served as the first sales manager of the Buick dealership.

The building itself is 60 feet wide and 100 feet long. The front building facing Main Street consisted of a show room, offices and restrooms. The rear, attached buildings contained service/repair shops including the paint and Duco shops, glass shop, body repair department, engine overhauling and repairing, radiator flushing equipment, etc.

The property was later occupied by a DeSoto/Plymouth dealership and later by the McCulloch Corporation. Continental Cablevision was located here in the late 1980s and early 1990s. It now contains a number of businesses including a dance studio, a dog training facility, and builder.

## BIBLIOGRAPHY and/or REFERENCES

*Reading Chronicle*, April 25, 1930; May 9, 1930.

Reading 350<sup>th</sup> Book Committee. *At Wood End – Reading, Massachusetts 1644-1994, A Pictorial History*, 1994: 135.

Town of Reading. *Valuation of Real and Personal Estates*, various dates.

**INVENTORY FORM B CONTINUATION SHEET**

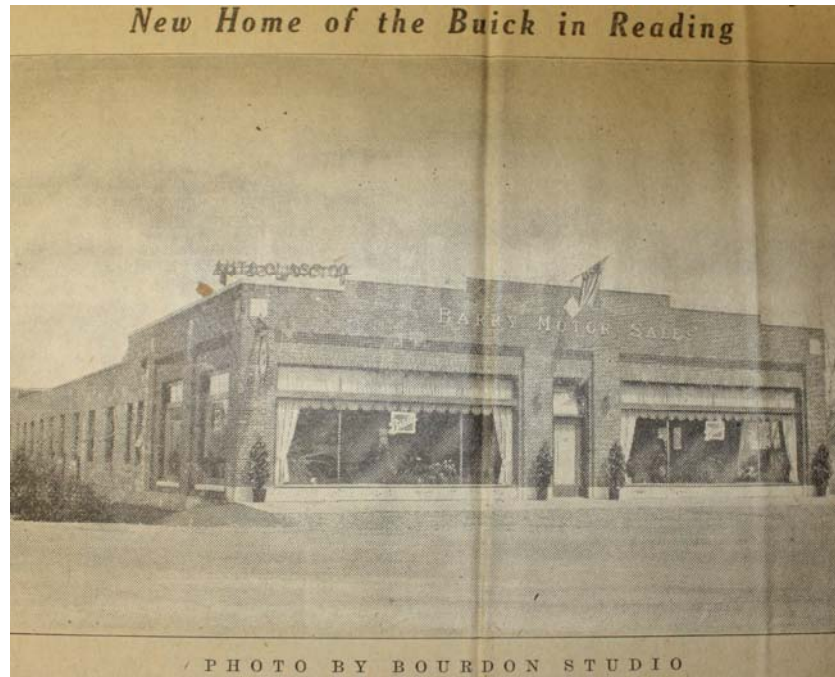
READING

335 Main Street

MASSACHUSETTS HISTORICAL COMMISSION  
220 MORRISSEY BOULEVARD, BOSTON, MASSACHUSETTS 02125

Area(s) Form No.

	400
--	-----



Source: *Reading Chronicle*, May 9, 1930.

**INVENTORY FORM B CONTINUATION SHEET**

READING

335 Main Street

MASSACHUSETTS HISTORICAL COMMISSION  
220 MORRISSEY BOULEVARD, BOSTON, MASSACHUSETTS 02125

Area(s) Form No.

	400
--	-----



Source: *Reading Chronicle*, May 9, 1930.