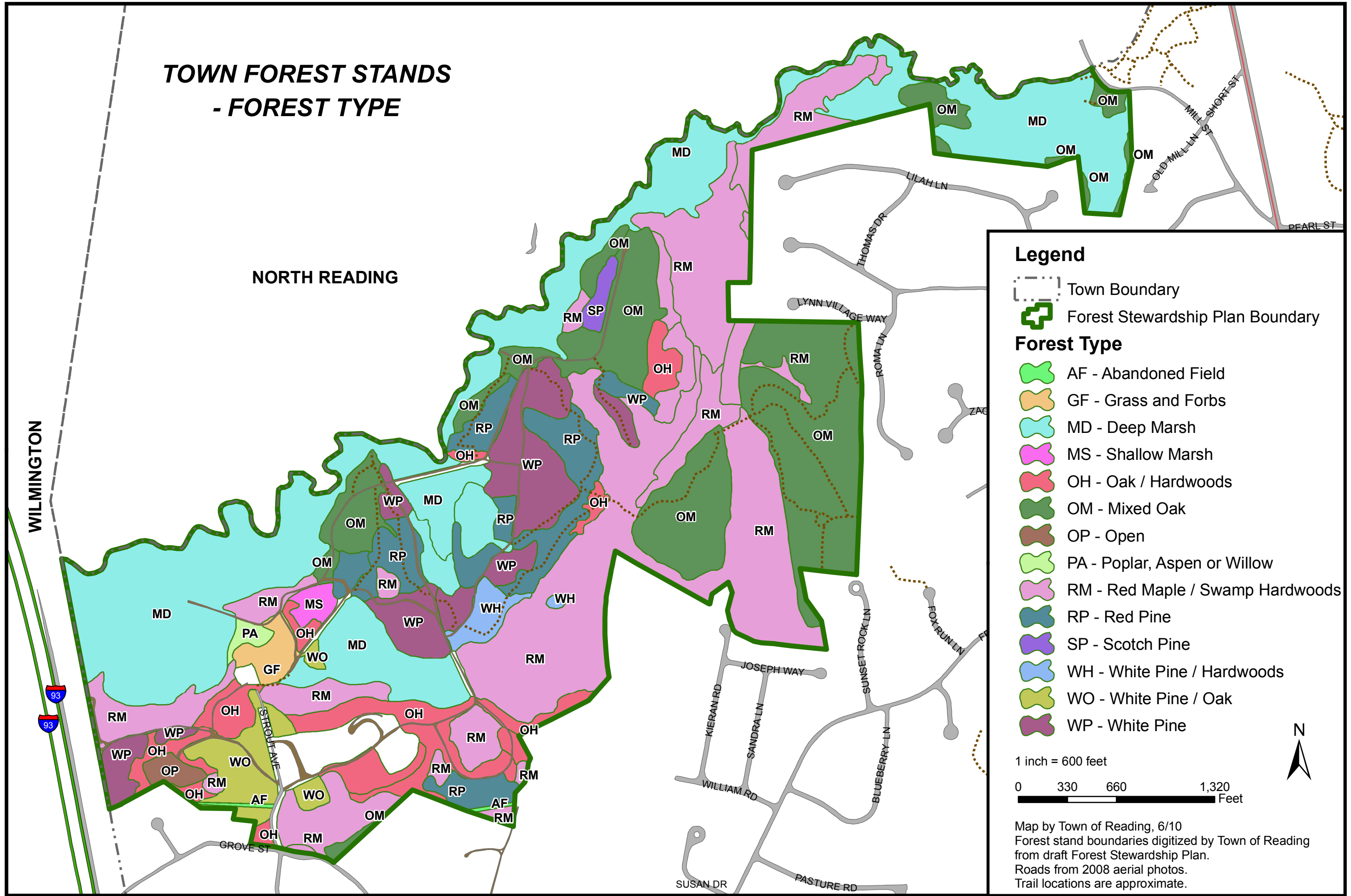


TOWN FOREST STANDS - FOREST TYPE

NORTH READING

WILMINGTON



Legend

- Town Boundary
- Forest Stewardship Plan Boundary
- Forest Type**
- AF - Abandoned Field
- GF - Grass and Forbs
- MD - Deep Marsh
- MS - Shallow Marsh
- OH - Oak / Hardwoods
- OM - Mixed Oak
- OP - Open
- PA - Poplar, Aspen or Willow
- RM - Red Maple / Swamp Hardwoods
- RP - Red Pine
- SP - Scotch Pine
- WH - White Pine / Hardwoods
- WO - White Pine / Oak
- WP - White Pine

1 inch = 600 feet
 0 330 660 1,320 Feet

Map by Town of Reading, 6/10
 Forest stand boundaries digitized by Town of Reading from draft Forest Stewardship Plan.
 Roads from 2008 aerial photos.
 Trail locations are approximate.