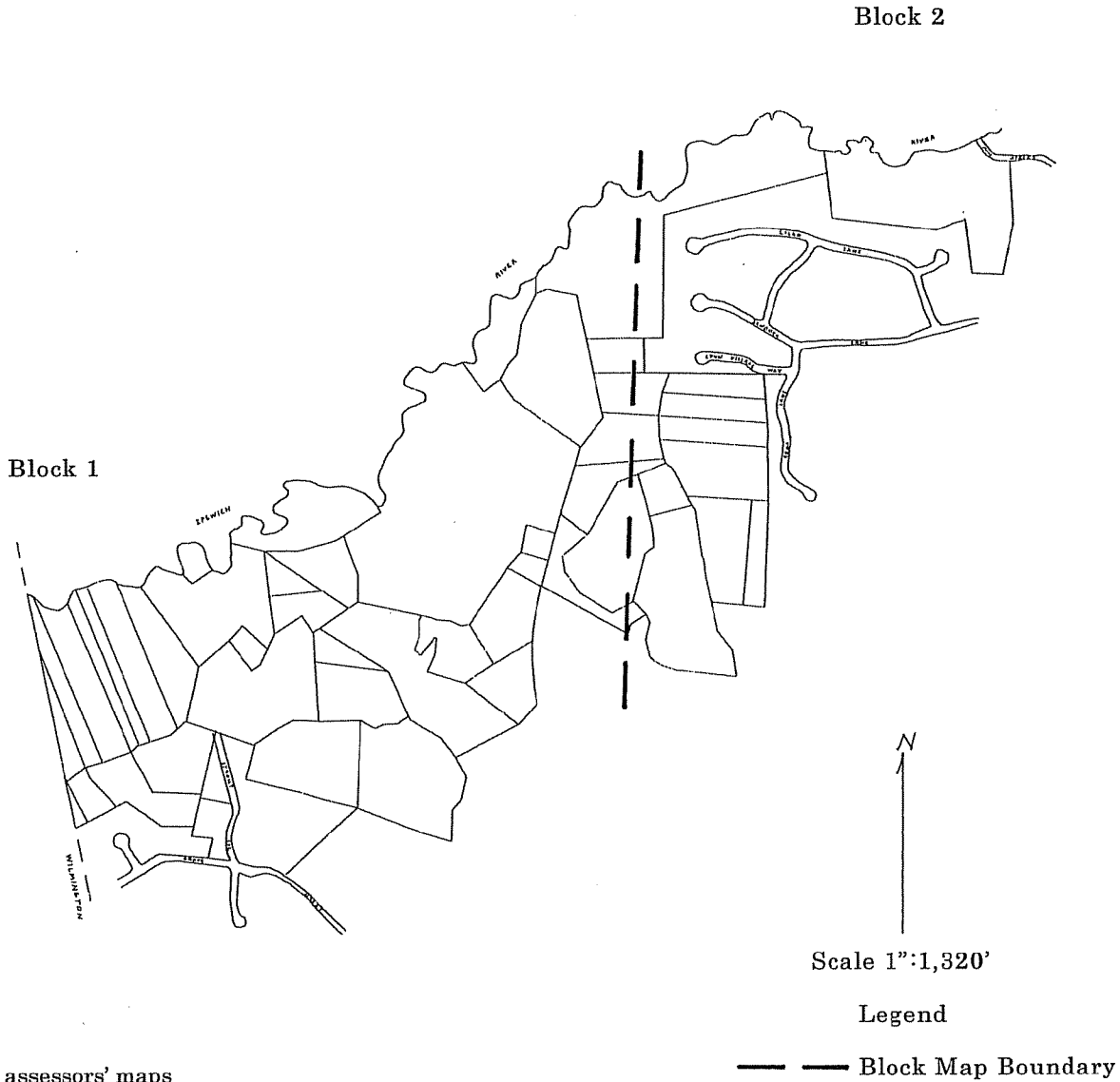


Key Map
for
Assessors' Parcel Maps

Reading Town Forest
Reading, Massachusetts

Owner: Town of Reading
16 Lowell Street
Reading, MA 01867



Reduced assessors' maps
Reading
See individual Block Maps
for Map and Lot numbers

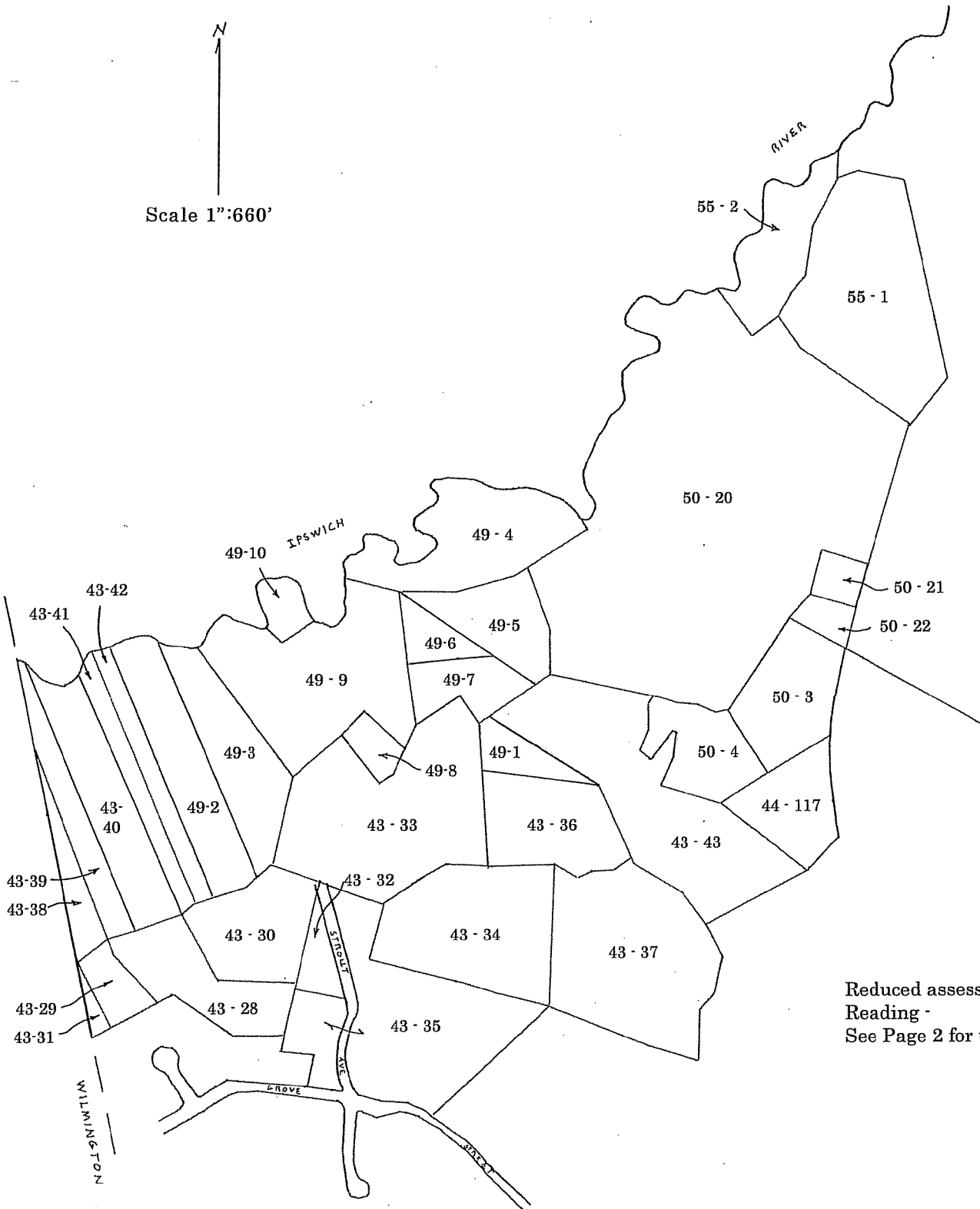
Prepared By
Philip B. Benjamin, CF
Benjamin Forestry Services, Inc.
So. Easton, Massachusetts 02375
May 12, 2010

Assessors' Parcel Map

Reading Town Forest
Reading, Massachusetts

Owner: Town of Reading
16 Lowell Street
Reading, MA 01867

N
Scale 1"=660'

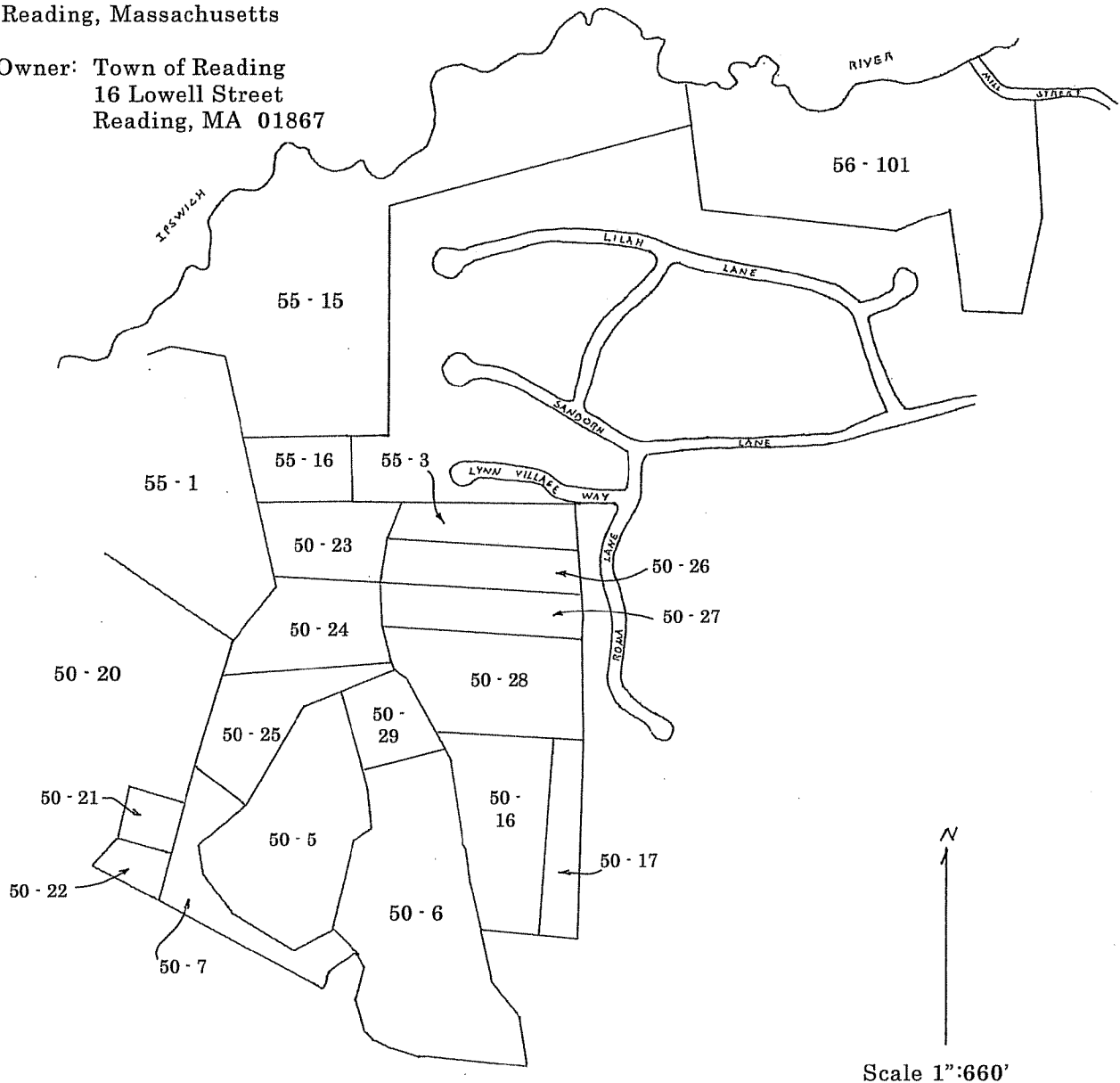


Reduced assessors' maps
Reading -
See Page 2 for the complete listing

Prepared By
Philip B. Benjamin, CF
Benjamin Forestry Services, Inc.
So. Easton, Massachusetts 02375
May 12, 2010

Reading Town Forest
Reading, Massachusetts

Owner: Town of Reading
16 Lowell Street
Reading, MA 01867



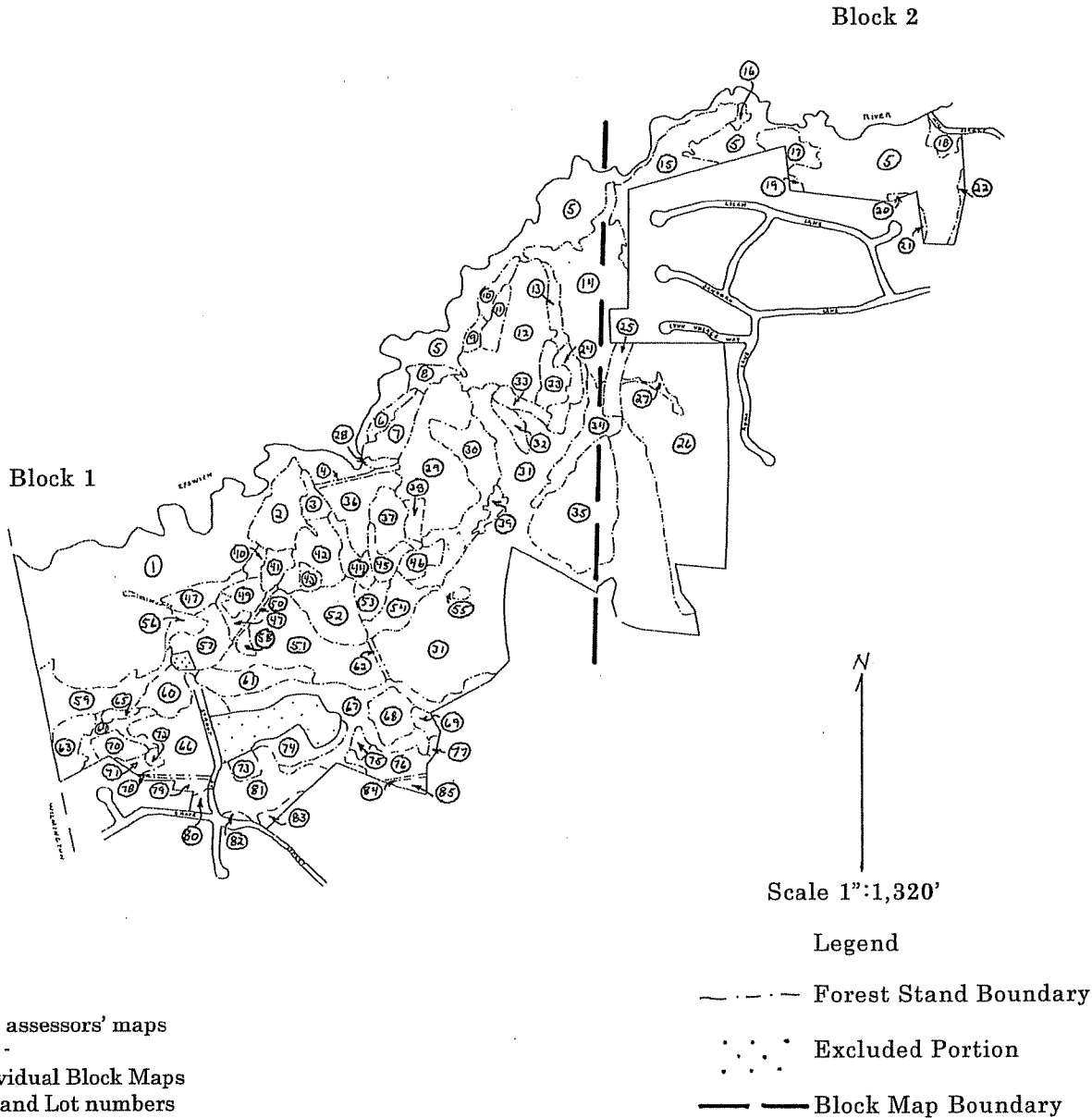
Reduced assessors' maps
Reading -
See Page 2 for the complete listing

Prepared By
Philip B. Benjamin, CF
Benjamin Forestry Services, Inc.
So. Easton, Massachusetts 02375
May 12, 2010

Key Map
for
Forest Stand Maps

Reading Town Forest
Reading, Massachusetts

Owner: Town of Reading
16 Lowell Street
Reading, MA 01867



Reduced assessors' maps
Reading -
See individual Block Maps
for Map and Lot numbers

Prepared By
Philip B. Benjamin, CF
Benjamin Forestry Services, Inc.
So. Easton, Massachusetts 02375
May 12, 2010

Forest Stand Map

Reading Town Forest
Reading, Massachusetts

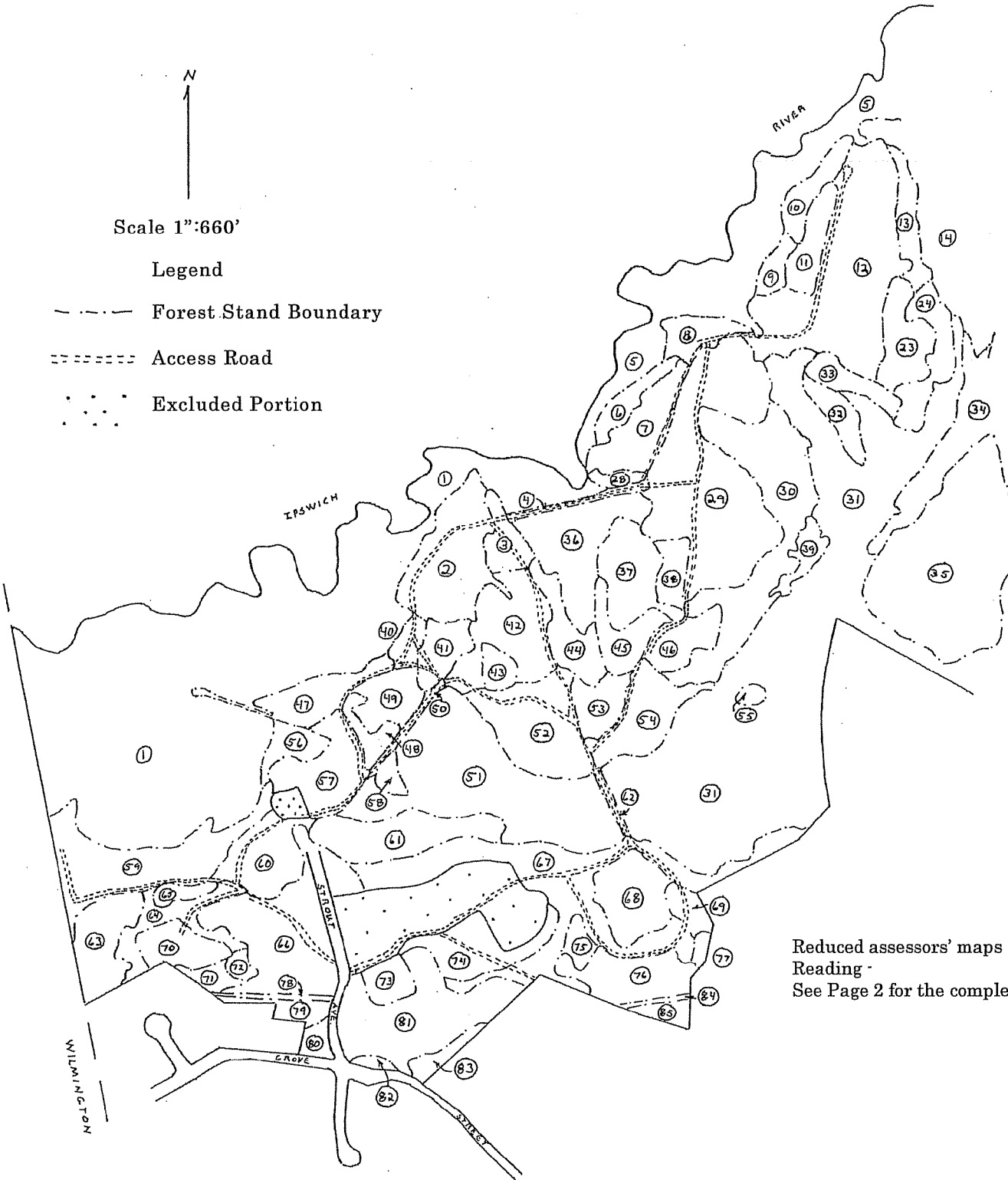
Owner: Town of Reading
16 Lowell Street
Reading, MA 01867



Scale 1":660'

Legend

- - - - - Forest Stand Boundary
- - - - - Access Road
- · · · · Excluded Portion

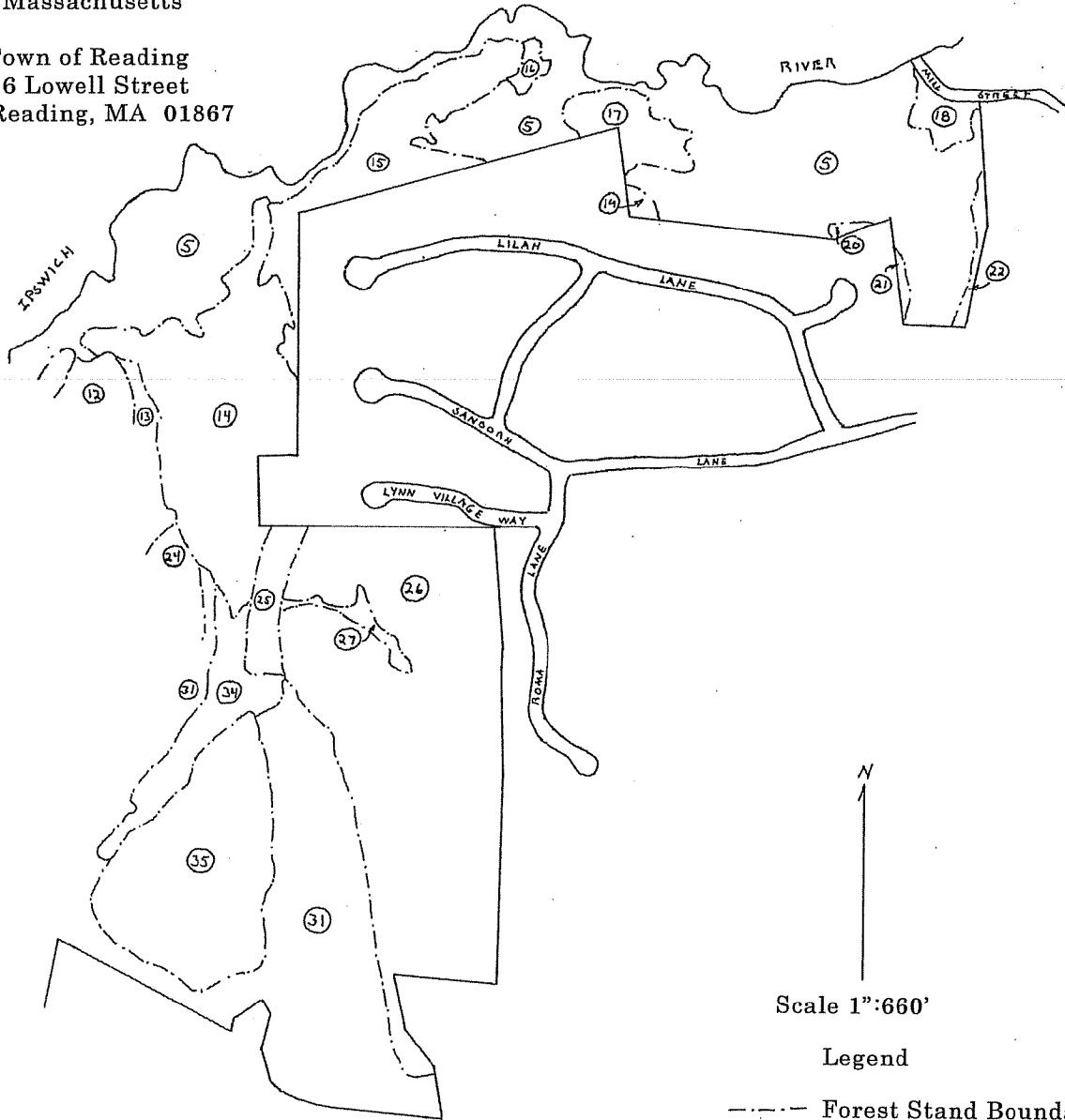


Reduced assessors' maps
Reading -
See Page 2 for the complete listing

Prepared By
Philip B. Benjamin, CF
Benjamin Forestry Services, Inc.
So. Easton, Massachusetts 02375
May 12, 2010

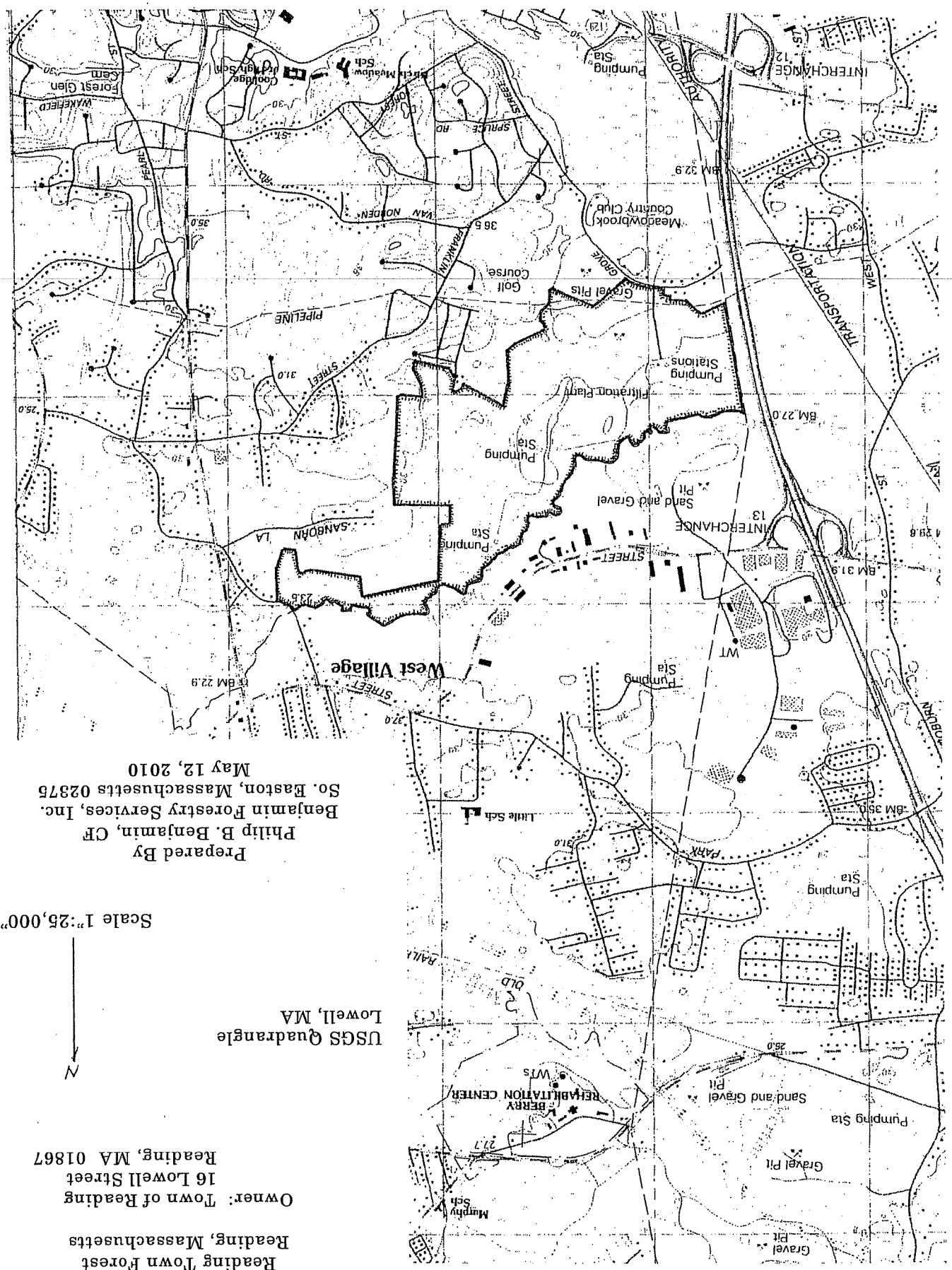
Reading Town Forest
Reading, Massachusetts

Owner: Town of Reading
16 Lowell Street
Reading, MA 01867



Reduced assessors' maps
Reading -
See Page 2 for the complete listing

Prepared By
Philip B. Benjamin, CF
Benjamin Forestry Services, Inc.
So. Easton, Massachusetts 02375
May 12, 2010



Prepared By
 Philip B. Benjamin, CF
 Benjamin Forestry Services, Inc.
 So. Easton, Massachusetts 02875
 May 12, 2010

Scale 1"=25,000'



USGS Quadrangle
 Lowell, MA

Reading Town Forest
 Reading, Massachusetts
 Owner: Town of Reading
 16 Lowell Street
 Reading, MA 01867

Locus Map