



# COMPREHENSIVE PARKING PROGRAM

## Review & Update

**Nelson | Nygaard**  
consulting associates

In association with:

McMahon Associates

Simon Design  
Engineering

Thomas Galligani  
Consulting



March 9, 2008

# Agenda

- Summary of Study's Findings
- Discussion of DRAFT Recommendations
- Wrapping Up / Next Steps

# Downtown Parking Study Reading, MA

## On-Street Utilization

Over Capacity (100%+)

81% - 100%

61% - 80%

41% - 60%

21% - 40%

0% - 20%

## Off-Street Utilization

Over Capacity (100%+)

81% - 100%

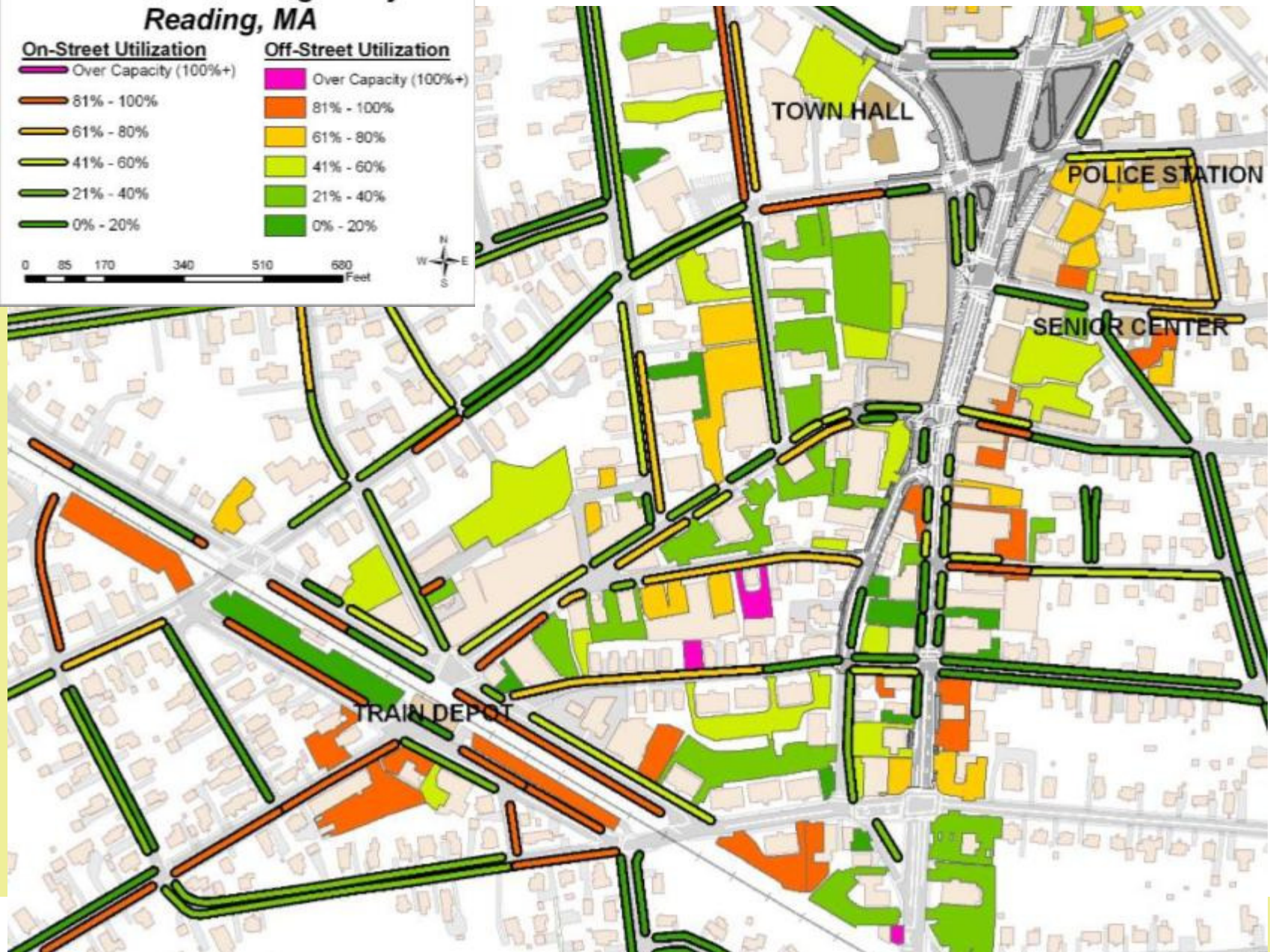
61% - 80%

41% - 60%

21% - 40%

0% - 20%

0 85 170 340 510 680 Feet



# Downtown Parking Study Reading, MA

## On-Street Utilization

Over Capacity (100%+)

81% - 100%

61% - 80%

41% - 60%

21% - 40%

0% - 20%

## Off-Street Utilization

Over Capacity (100%+)

81% - 100%

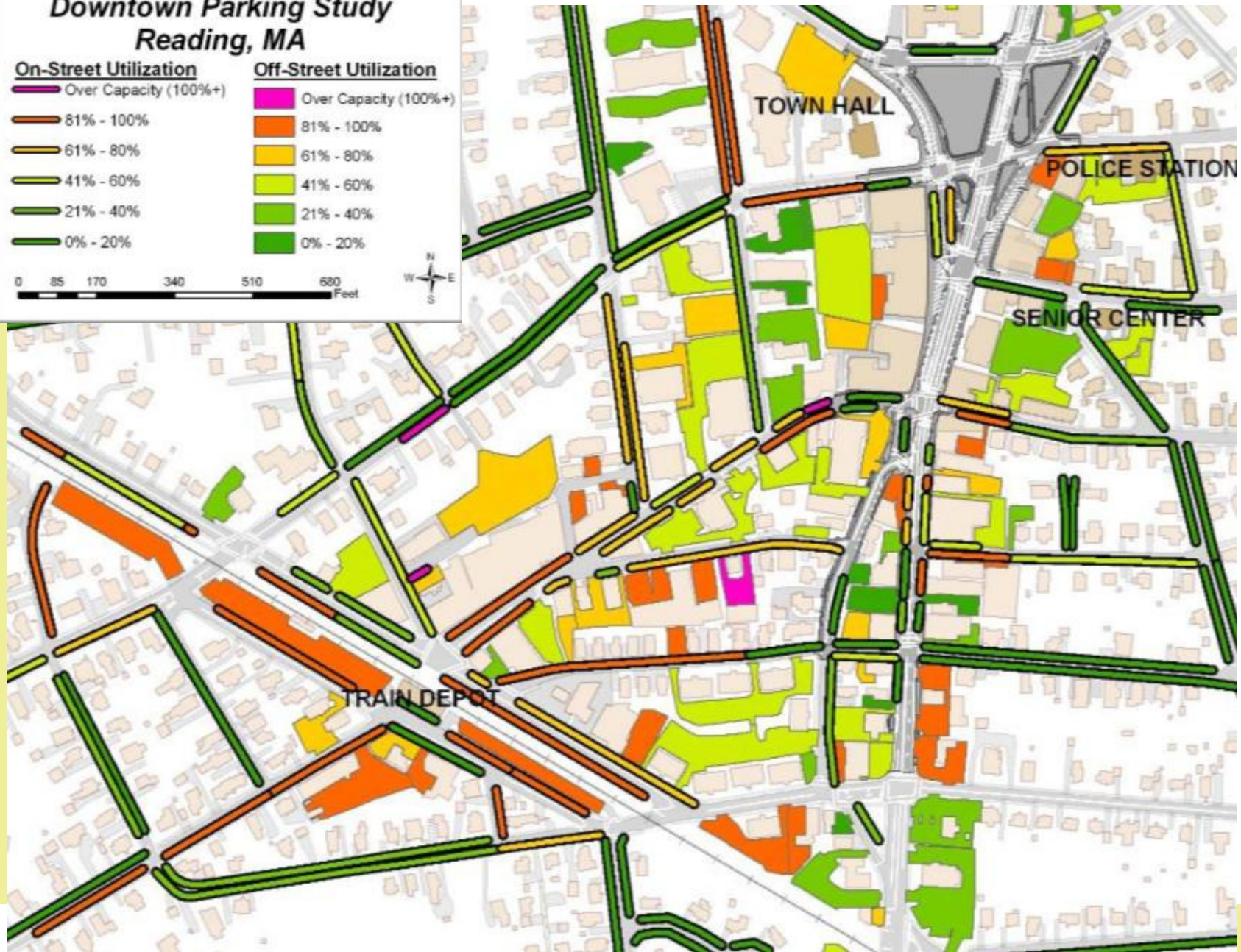
61% - 80%

41% - 60%

21% - 40%

0% - 20%

0 85 170 340 510 680 Feet



# Downtown Parking Study Reading, MA

## On-Street Utilization

Over Capacity (100%+)

81% - 100%

61% - 80%

41% - 60%

21% - 40%

0% - 20%

## Off-Street Utilization

Over Capacity (100%+)

81% - 100%

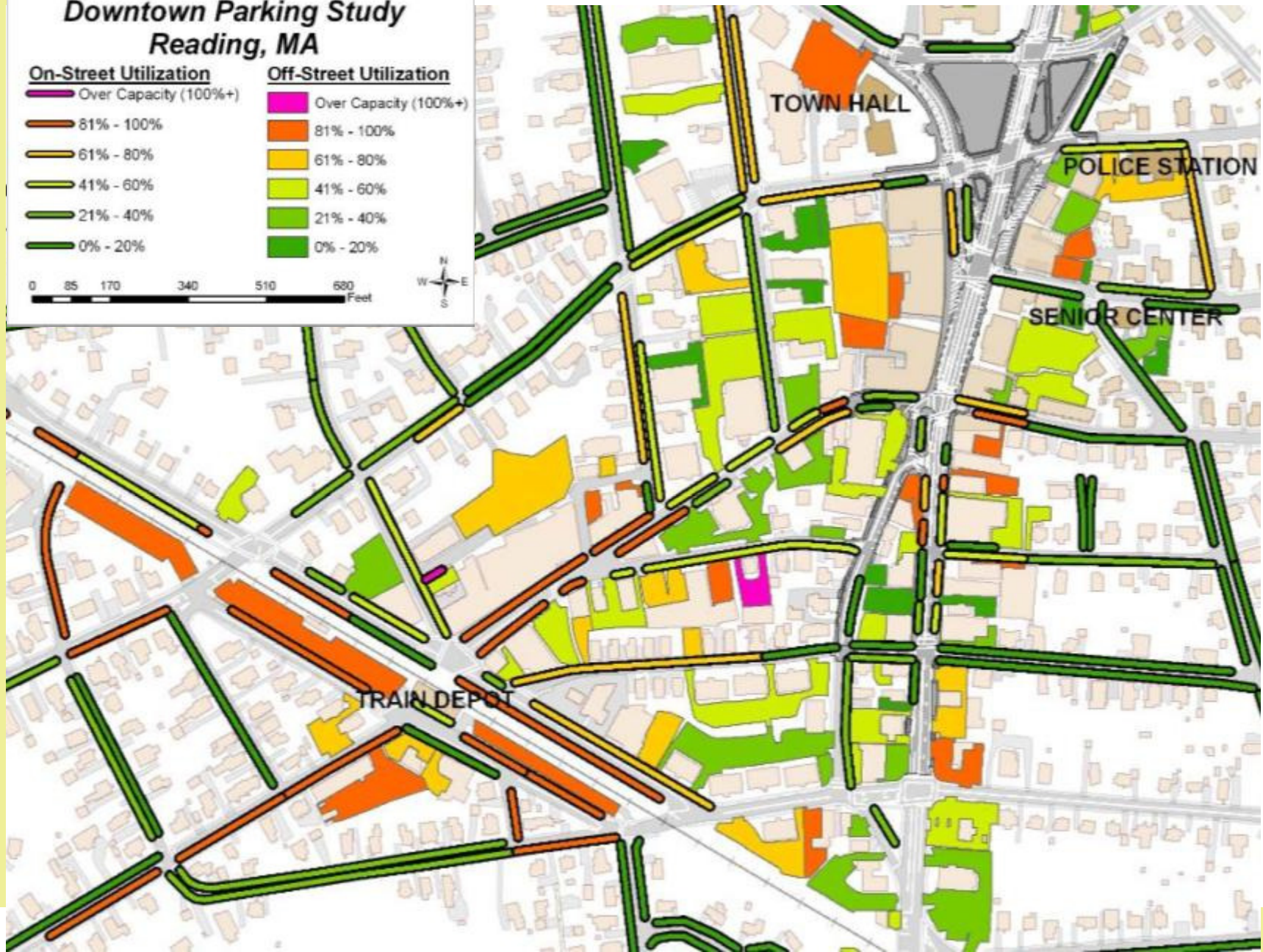
61% - 80%

41% - 60%

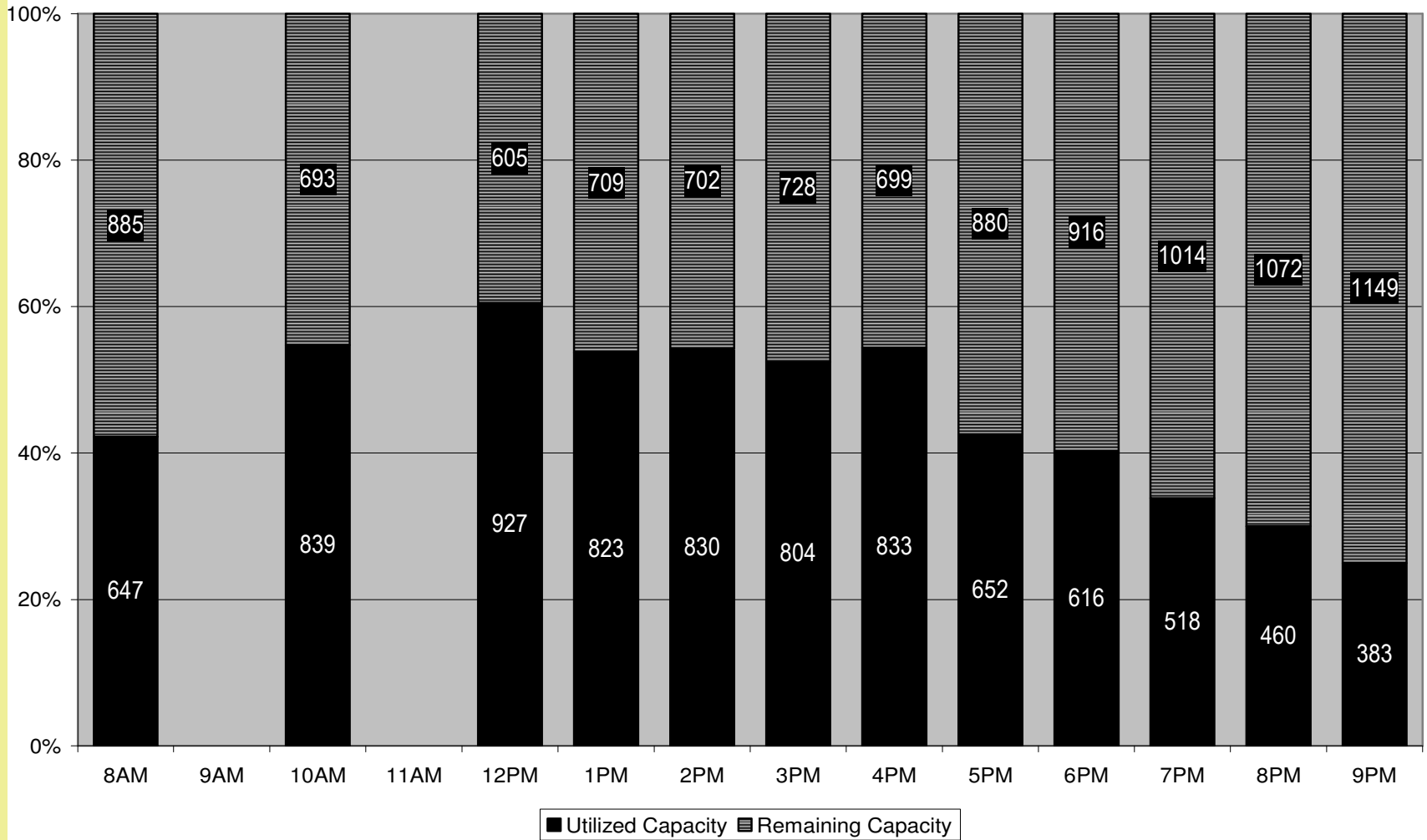
21% - 40%

0% - 20%

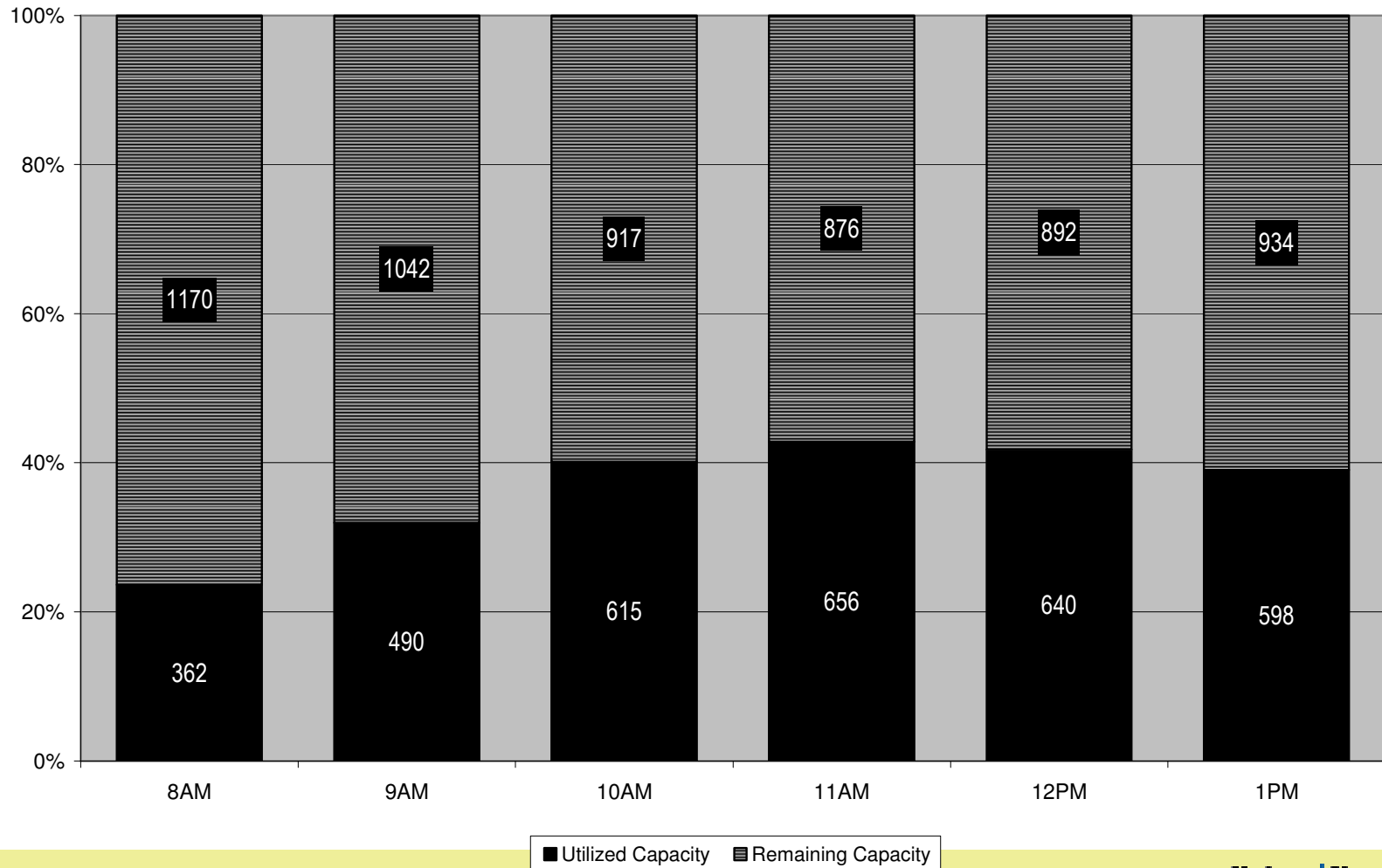
0 85 170 340 510 680 Feet



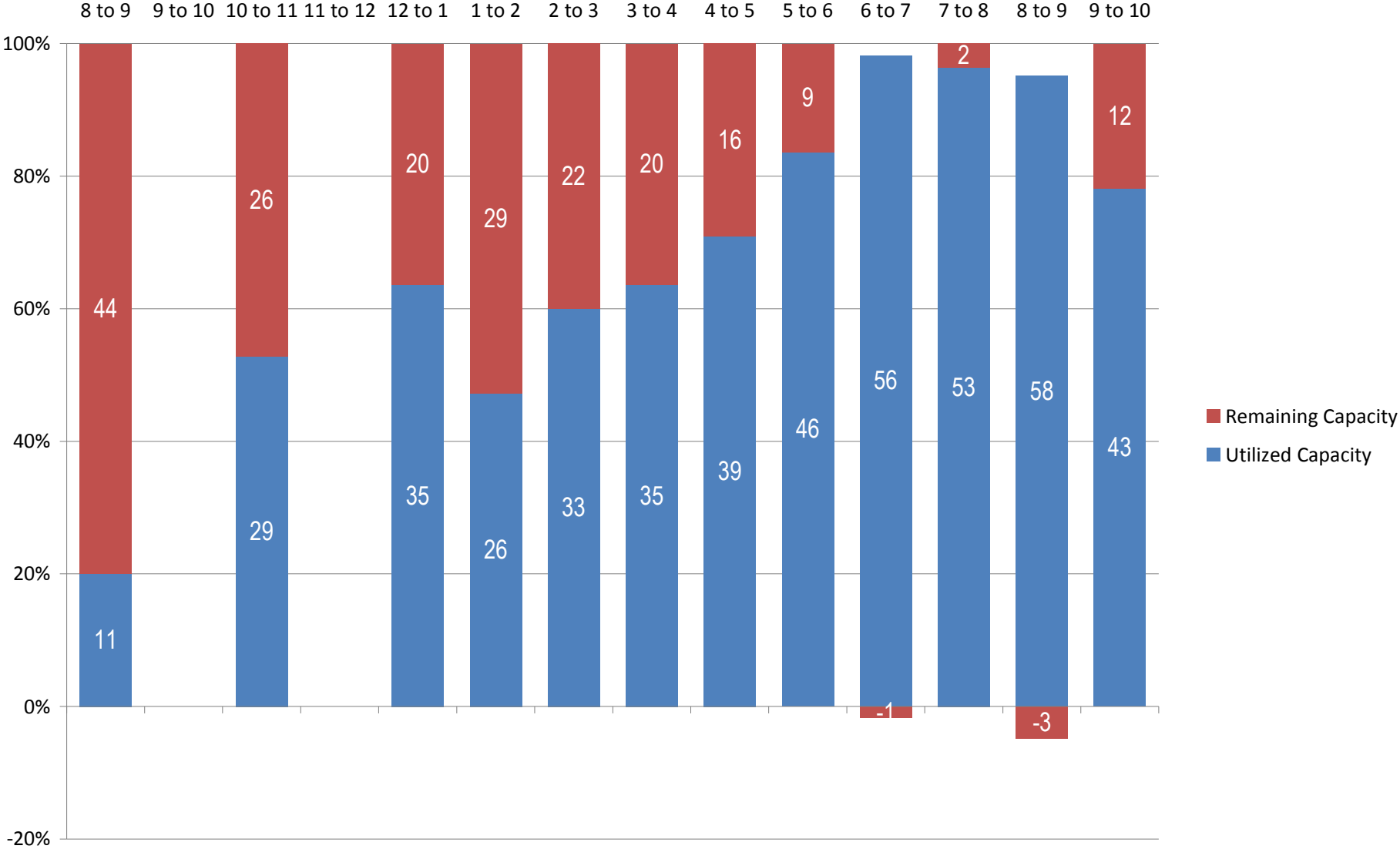
# Downtown Core Weekday Utilization Profile



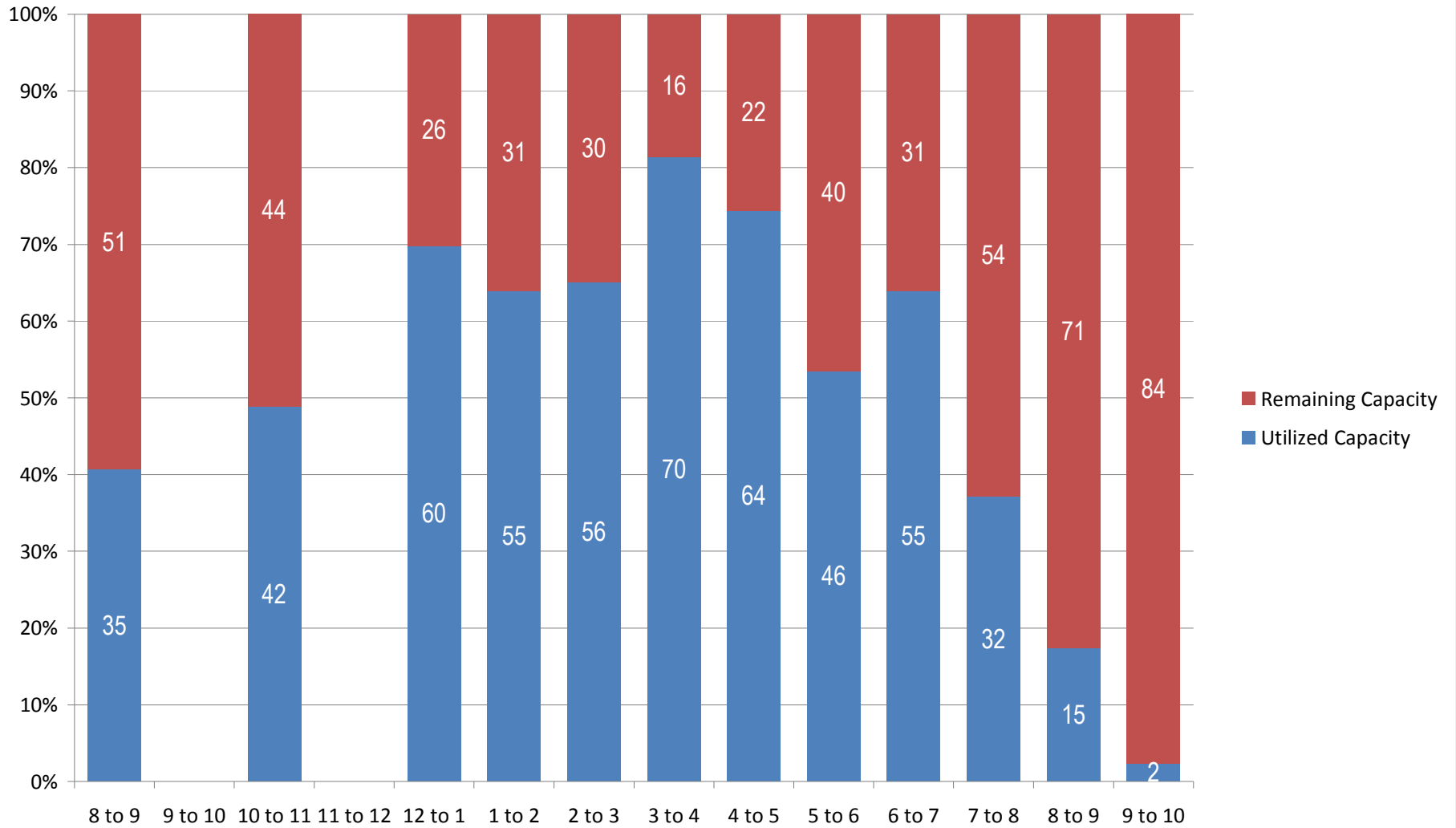
# Downtown Core Weekend Utilization Profile



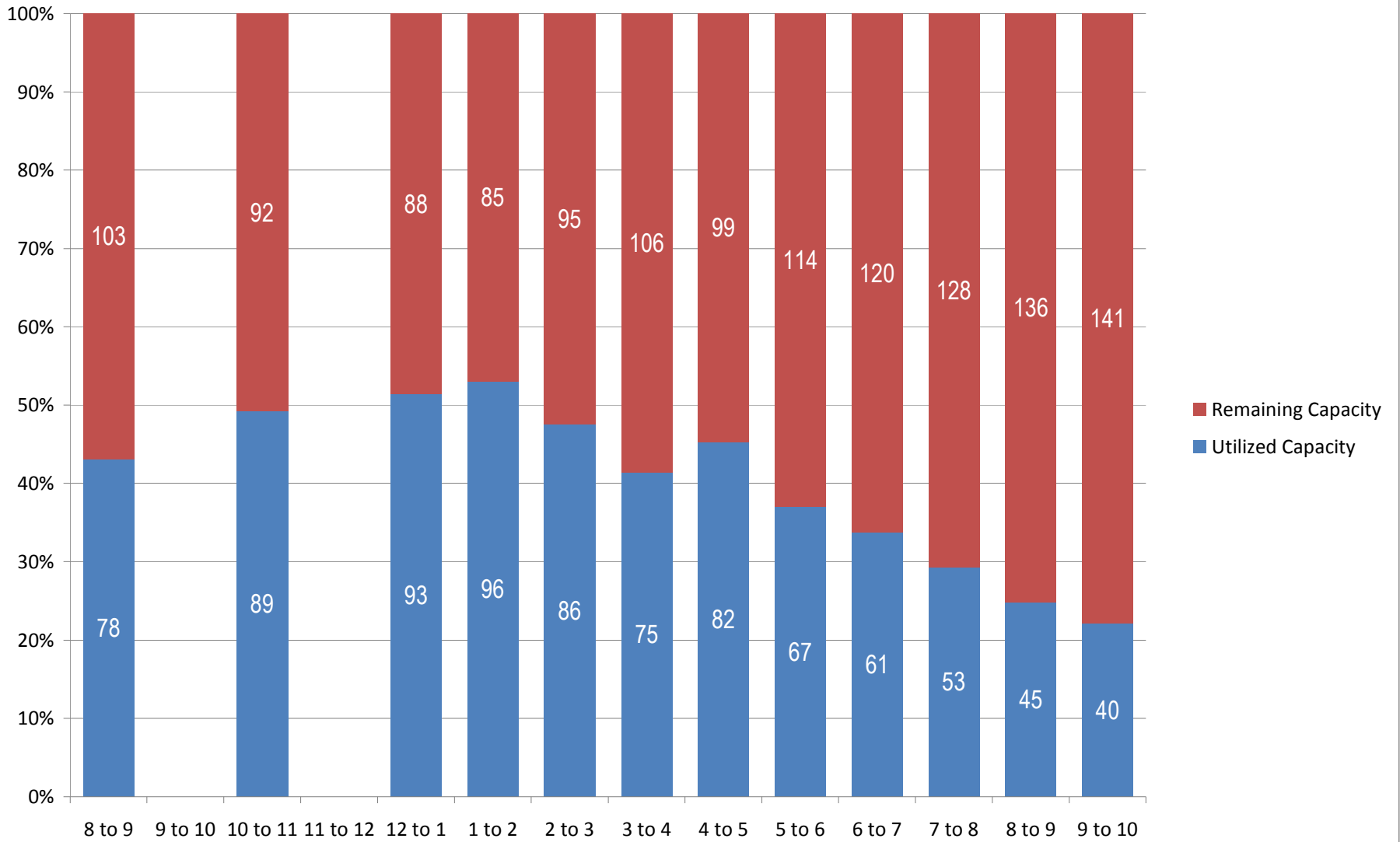
# CVS Public Lot



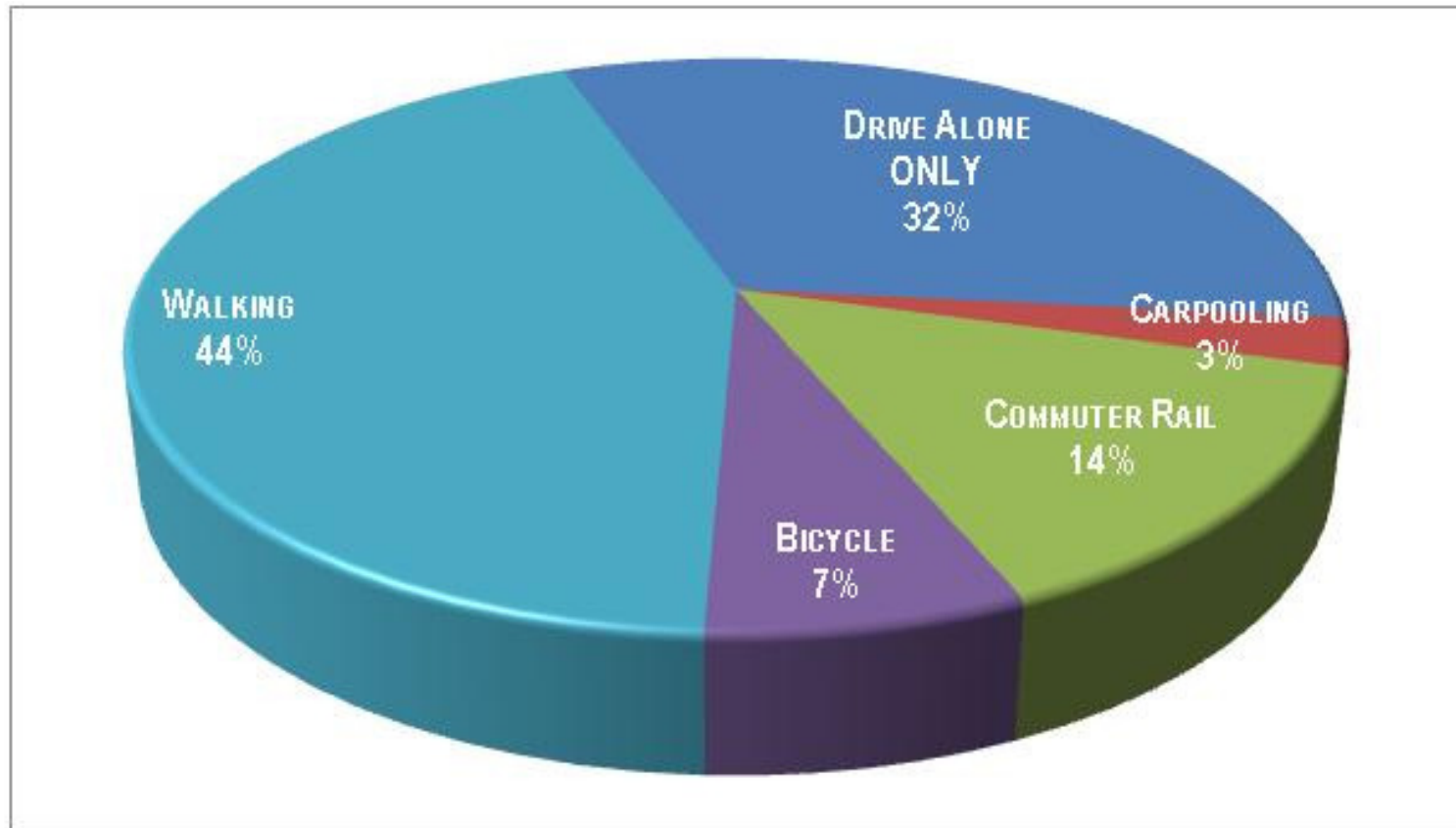
## Atlantic Market *Off-Street Parking*



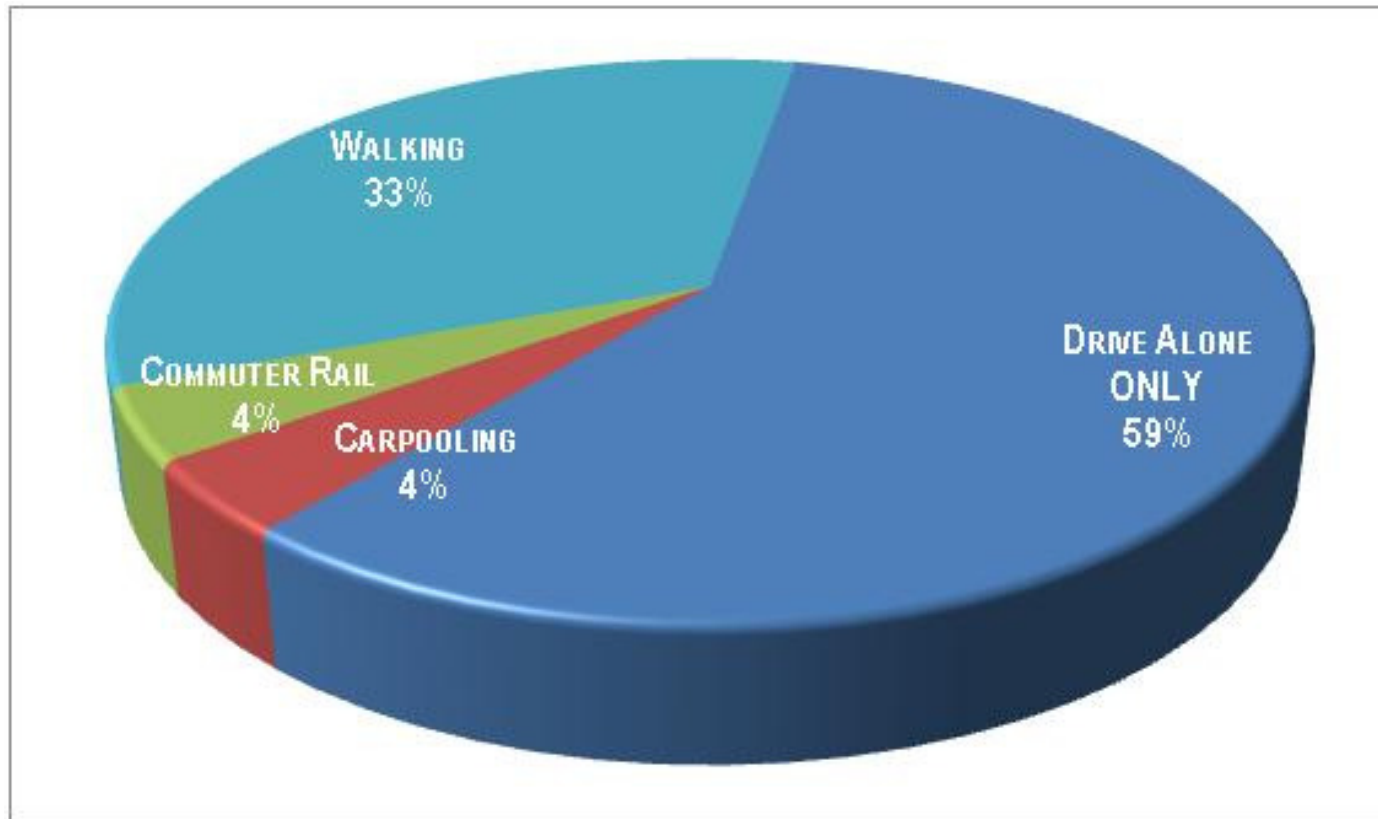
## All Lots with Access to/from Haven Street



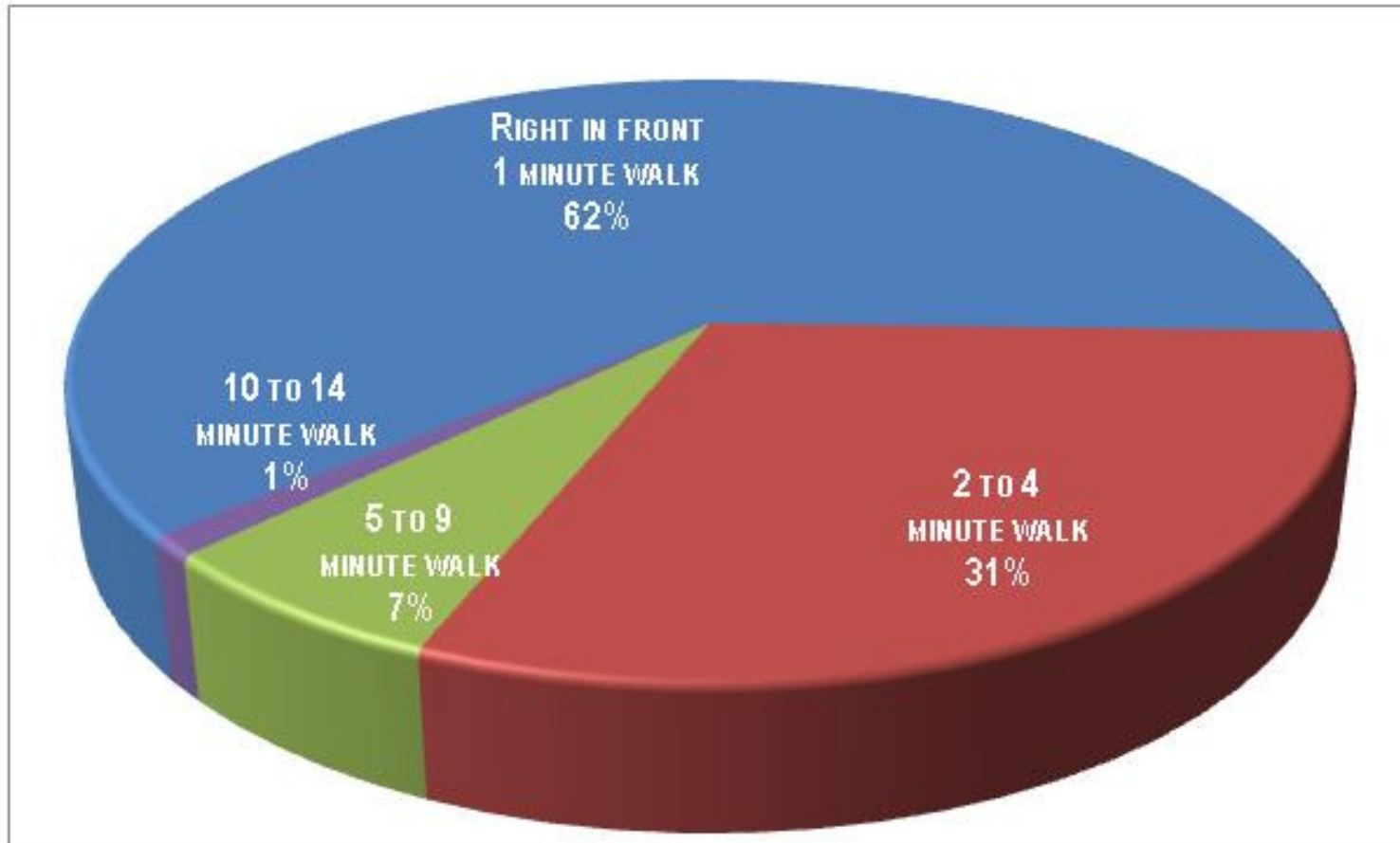
# Do You Always Use a Car?



# Do You Always Use a Car? Workers



# Where Do You Find a Space?



# How Long Do You Park?

