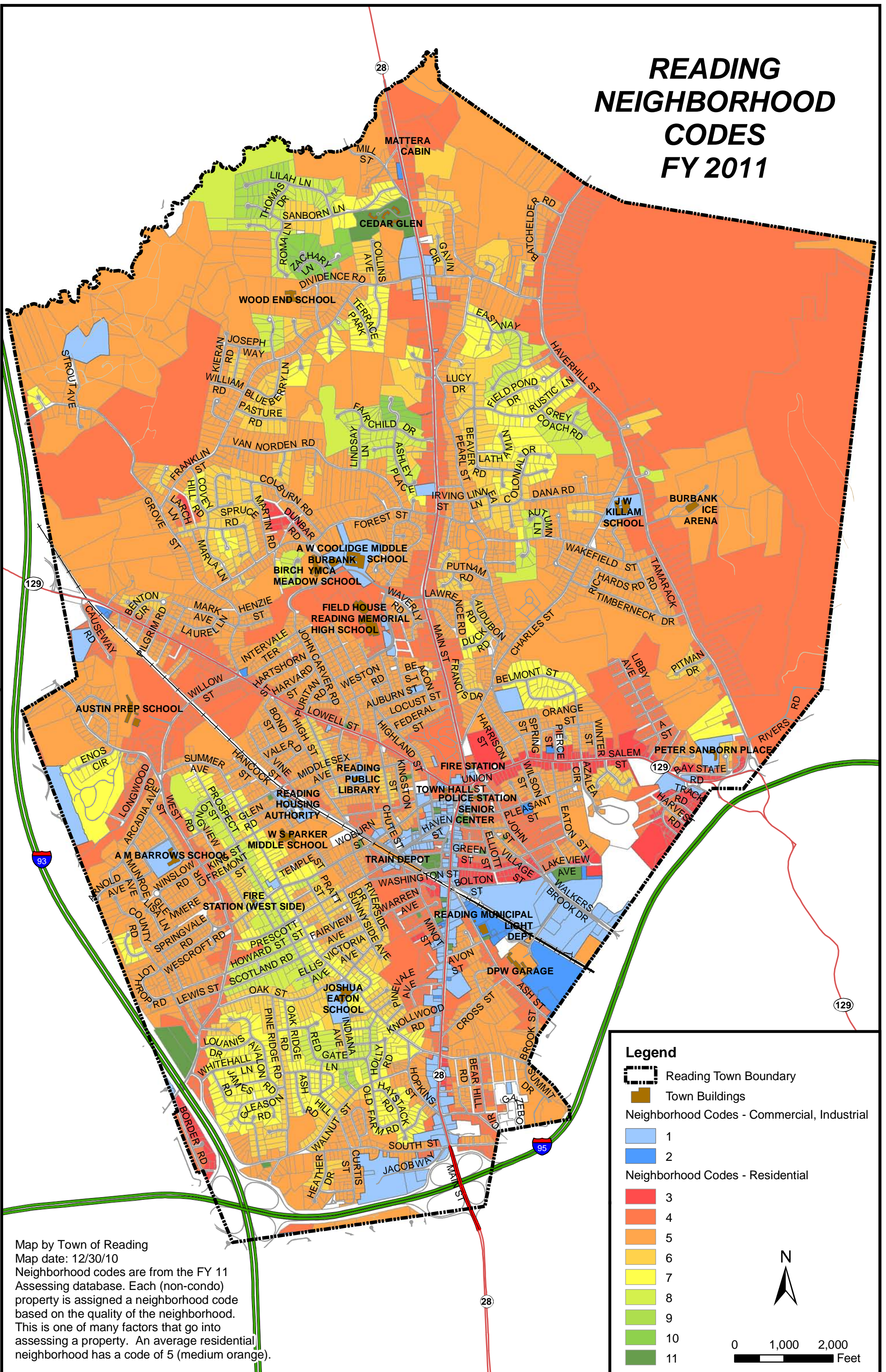


# READING NEIGHBORHOOD CODES FY 2011



**Legend**

- Reading Town Boundary
- Town Buildings
- Neighborhood Codes - Commercial, Industrial
  - 1
  - 2
- Neighborhood Codes - Residential
  - 3
  - 4
  - 5
  - 6
  - 7
  - 8
  - 9
  - 10
  - 11

0 1,000 2,000 Feet

N

Map by Town of Reading  
 Map date: 12/30/10  
 Neighborhood codes are from the FY 11 Assessing database. Each (non-condo) property is assigned a neighborhood code based on the quality of the neighborhood. This is one of many factors that go into assessing a property. An average residential neighborhood has a code of 5 (medium orange).